

Passport Activity Newsletter



October 2023

Welcome to the **October edition** of our Rotherham CU Passport Activity Newsletter. We'll be publishing a CU Passport Activity Newsletter just before each school holiday, packed full of fun activities and ideas to keep you busy – in this version, you can find arts and crafts, sign language, nature, bug hunts, scarecrow trail, outdoor cinema, Parkour, football, gymnastics, mini trampolines, and more! You can also find info about the Rotherham Holiday Activities and Food (HAF) and eligibility.



In our newsletters, you'll find activities taking place across the town in the school holidays – and if your child has a Passport to Learning, they'll be able to earn CU credits for taking part in all of them! Some of the activities are FREE while some will need to be paid for, and some require booking in advance. We would always recommend contacting the Learning Destination (approved activity provider) before making a special journey to join them, and you can find contact details of ALL of our Learning Destinations here:

www.childrensuniversity.co.uk/activity-search

During 2020 and 2021, our friends at Sheffield CU published daily CU Home Learning Challenges and reached **98** of them by the end of the school year! You can find them and more here: <https://bit.ly/SCUHomeLearningChallenges1-98> <https://bit.ly/SCUWeeklyEssentialSkillsChallenges> We'll be sharing a selection of them in these newsletters, so why not have a go at completing them at home? You'll need to take your work into your school to show the staff, and why not tell them about all the things you learned, and how you developed a range of skills by completing the challenges? They'll give you an activity stamp code so you can enter it onto CU Online and claim your CU credits towards your next award.

If you see challenges published by other CUs, then do feel free to complete them too. To claim your CU credits for these, you'll need to show your work to your teacher in school, then they'll be able to give you your CU activity stamp code to add to CU Online.

You can find Learning Destinations in Rotherham and beyond at www.childrensuniversity.co.uk/activity-search or see our latest list at the end of the newsletter, as well as in Sheffield and Doncaster too, so why not visit some of them and collect **EVEN MORE** CU credits in your Passport to Learning? We're welcoming new Learning Destinations to Rotherham all the time – see details later in the newsletter, on how you can nominate an activity provider to join us! Make sure you're following us on Twitter for our Rotherham CU news!



@RotherhamCU



Did you know?



The Passport to Learning is your key to exciting learning activities in and beyond Rotherham!

Looking for a new activity to try? Want some ideas for things to do nearby? Are you having a trip out somewhere? Going on holiday? Visiting friends and family? You can collect CU credits at museums, castles, forests, coastlines, mountains, cathedrals, zoos and lots of other famous landmarks in Rotherham and right across the UK.



1. Get ready!



- **Get a Passport to Learning.** Ask in school how you can do this.
- **Visit the website:** www.childrensuniversity.co.uk/activity-search

2. Get in on the action!



- **Use the website to find details of Learning Destinations** before you go. Why not refresh your search whilst you're out and about?
- **Visit them and learn lots!** Look out for structured learning activities such as trails, talks by experts, quizzes and workshops (remember: **only** these structured activities count towards CU credits).



3. Get your CU credits!

- **Collect your CU Activity Stamp.** Ask a member of staff at the Learning Destination for the code. Record it in your CU Passport to Learning.
- **Claim your CU credits.** Log into CU Online, enter your Activity Stamp Code and see your credits increase. Why not review the activity (tell us what you learned and what you thought about it), and we'll award some extra credits! Ask in school if you need any help.



CU Home Learning Challenge: Paper Weaving!

You will need:

- Plain card (empty cereal boxes are great for this!)
- Plain paper (different colours)
- Pencil
- Ruler (or other straight-edged object)
- Scissors



Step 1: Turn your card portrait way round. Measure and draw out a number of rectangles down the centre of your plain card, running across your paper (left to right). They need to be as equal in size, and as straight as possible. You could use the template attached to help.

Step 2: Cut out the rectangles as neatly as possible. Ask an adult to help if you need to.

Step 3: Cut your coloured paper into strips - as equal in size as possible. You might want to measure them first?

Step 4: Take your first coloured strip and thread it from the bottom, in and out, in and out, until you reach the top. Then, take your next strip of coloured paper, and thread it in and out, but this time from the top so it is threaded opposite to the previous strip.



Step 5: Repeat this until your sheet of card is full of beautiful, brightly coloured weaving!

Step 6: You could repeat this activity using different shaped card - get creative!

Remember to show evidence of your learning to a teacher in school (photos, videos, art work, etc.) and they'll give you the CU Activity Stamp Code to enter onto CU Online and claim your credits

What skills will I be developing in this challenge?



CU Home Learning Challenge: Learn to Sign Your Name!

No, you won't need to create a new autograph or signature! We'd like you to learn some sign language!

You will need:

- Your fingers!
- Access to the internet if you want to play some sign language games (<https://www.british-sign.co.uk/fingerspelling-alphabet-charts>)

Have a look at the alphabet charts attached to this challenge (you can also download them from the link above).

Part 1: Can you use the fingerspelling charts to identify the letters to spell out 'CU' for Children's University?

Part 2: Work out how to spell your name. Maybe you could learn how to spell the names of other people in your house, your friends, or even your teacher's name?



Part 3: Can you learn to spell out a short sentence or message? Perhaps 'Thank you', or 'We love you'? Can you get someone to take photos/video of you signing your message letter by letter, then put them together into a picture to send to someone? Or maybe even a short video of you signing your message? We'd love to see them too <https://www.british-sign.co.uk/shp/product/introducing-british-sign-language-enrolment/>

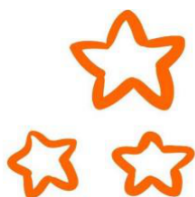
!

Part 4: If you're enjoying this activity, there are lots of signs that mean whole words rather than single letters - such as names of family members (Mum, Dad, sister, etc.) or signs for greetings (hello, goodbye, etc.) See if you can learn these too!

Remember to keep practising your new skill so you don't forget the signs!



Remember to show evidence of your learning to a teacher in school (photos, videos, art work, etc.) and they'll give you the CU Activity Stamp Code to enter onto CU Online and claim your credits



What skills will I be developing in this challenge?



BRITISH SIGN LANGUAGE - FINGERSPELLING



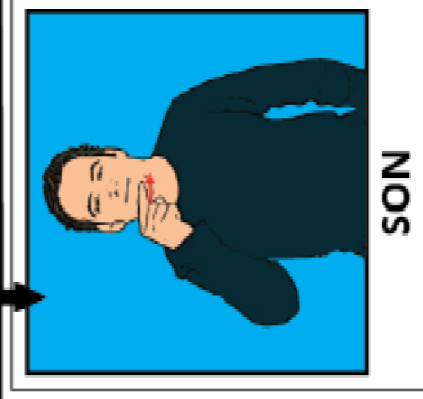
**RIGHT
HANDED**



british-sign.co.uk

LEARN BRITISH SIGN LANGUAGE ONLINE
AT **WWW.BRITISH-SIGN.CO.UK**

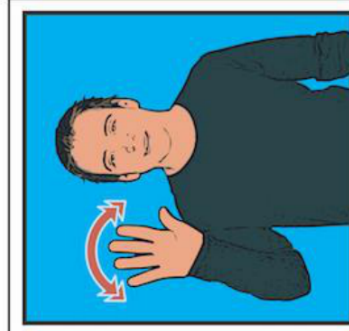
BRITISH SIGN LANGUAGE - FAMILY



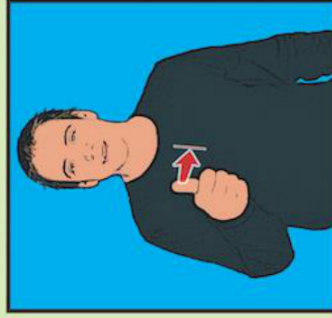
british-sign.co.uk

Learn British Sign Language online
www.british-sign.co.uk

BRITISH SIGN LANGUAGE - GREETINGS



HELLO



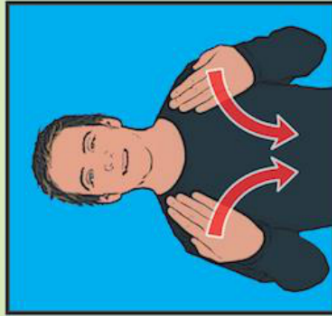
GOOD



MORNING



AFTERNOON



NIGHT



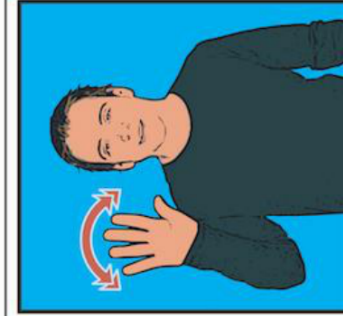
HOW ARE YOU?



THANKS/PLEASE



SORRY



GOODBYE



british-sign.co.uk

ONLINE COURSE
Learn online from home - only £19.99

CU Home Learning Challenge: Tree Spotter and Leaf Collector!

We're lucky enough that we don't have to travel far from our homes to reach a park, woodland or even just a copse (...the word for a small group...) of trees. So, we want you to get out and about and do some tree spotting.

What you will need:

- A small bag to collect leaves in
- The leaf hunt sheet attached
- Paper, pencil crayons, pencils, etc.
- Glue



Step 1: With an adult, go for a walk. Find somewhere where there are at least a few trees, but the more trees, the better. A woodland is perfect!



Step 2: Choose one tree. Look at its shape from a distance - is it more rounded, or triangular (narrower at the top than the bottom), or even more of an oblong shape (tall and thin)?

Step 3: Look at the trunk closely if you can. What is the bark like? Is it smooth or rough?

Step 4: Look at the shape of the leaves - what shape are they? What are the branches like?

Step 5: Collect a leaf (look to see if there are any on the floor that have fallen off and choose these first). If not, carefully and gently pull one off the tree. Look closely at the leaf - what colour is it? How might you describe the leaf's texture? Is it thin and fragile or thick and waxy? Turn the leaf over - can you see the veins running along it? This is where the water runs from the tree's trunk and along the branches and into the leaf to 'feed' it and help it to grow.

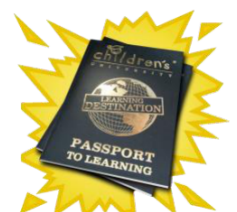
Step 6: Look at the 'Leaf Hunt' sheet attached. Try and match your leaf to one on the sheet, to help you identify the type of tree you're looking at. Some of them are very similar, so make sure you look closely, including around the edges of the leaves! Keep the leaf you chose in your collecting bag.



Step 7: Find another tree and do the same. Try and find as many different type of leaves as you can. When you get home, could you use the leaves you collected to make a picture. You could even use the leaves as the bodies for characters, by drawing extra parts such as arms and legs, eyes, etc.!

Remember to show evidence of your learning to a teacher in school (photos, videos, art work, etc.) and they'll give you the CU Activity Stamp Code to enter onto CU Online and claim your credits

What skills will I be developing in this challenge?



Leaf hunt



alder



ash



beech



birch



elder



field maple



hawthorn



hazel



holly



horse chestnut



oak



rowan



sycamore

Have you found any other leaves? Draw or stick them here and find out their names:



Start your own adventure at naturedetectives.org.uk

Fun staff for kids, families and schools by the Woodland Trust, a charity registered in England & Wales (204344) and Scotland (SC050805), in Acorn Park, Gwentwyn, Gwent, NP23 5LL. ©2007 You may not copy this sheet, in full or partly, for more than personal purposes. You may not use it for other activities - please ask for more information. Gwent 01895 923 2626

CU Home Learning Challenge: Garden Bug Hunt!



You will need –

- Pencil
- Paper
- Colouring pencils or felt tips

You could also use a magnifying glass however, this is not essential.

Step 1 – Step out on to your garden or in a park and look in any area. This could be in the grass, flowers and bushes or even on a concrete patch.

Step 2 – Have a good look around and see what bugs you can find. This may require you to be patient and quiet as some bugs can get scared when they hear noises or see people. Lots of bugs like to hide under things, so try turning over rocks, stones, sticks or try looking under large leaves.

Step 3 – Make a note of the bugs you see, and a description of what it looked like along with a drawing of each one you find. Remember to put any creatures back where you found them. Same too for any stones, rocks or logs you moved.

Step 4 - Could you go online and try and find the names of the bugs you found, or use the bug hunt sheet from the Woodland Trust above? You can find the full sheet and some top tips here:

<https://www.woodlandtrust.org.uk/blog/2019/04/minibeast-hunt/>



Remember to show evidence of your learning to a teacher in school (photos, videos, art work, etc.) and they'll give you the CU Activity Stamp Code to enter onto CU Online and claim your credits



What skills will I be developing in this challenge?



CU Home Learning Challenge: Create-Your-Own Jigsaws!

You will need:

- Some paper or card (recycled boxes or packaging is great for this)...or...
- An old cereal box or similar, or a picture or poster you don't mind cutting up (ask an adult first!)
- Pens or crayons
- A ruler or something with a straight edge (if you want simple shaped pieces)



Step 1: Think about the picture that will be on your jigsaw. Jigsaws are most attractive and easiest to complete when the whole jigsaw is covered with colour. You could even fill the image with bubble writing and a positive, kind message for others to read when they complete your jigsaw?

Step 2: Get creative! You might want to draw out your design lightly in pencil first then make it as bright and colourful as you can, including the background. For younger children or those with special educational needs or disabilities, you could find an existing picture or poster (cereal box fronts are ideal!) to cut up, rather than designing their own image?



Step 3: Once you've finished your design, take a photo of it (you might need this later to help someone complete your jigsaw!)

Step 4: Turn your picture over and use your ruler (or straight-edged object) to draw faint pencil lines on the back. You could even draw more traditional jigsaw piece shapes like in the picture? Think about how the lines cross each other - what shape pieces do you want for your jigsaw? How many pieces will it have? How big/small do you want the pieces to be? Keep drawing lines until the whole picture is divided up. You could even draw wonky lines without a ruler or straight-edged object!

Step 5: Using your scissors carefully (you might need to ask an adult for help), cut along the lines. Take your time - it's not easy to cut along lines neatly! Count the pieces and keep them all together. You might want to write faint numbers on the back of the pieces so you know if you have them all each time you pack your jigsaw away!

Step 6: Give your jigsaw to someone else to complete. See if they can complete it without looking at the photo, but they might need it to help them. How long does it take them? Can anyone else in your house do it faster?

Remember to show evidence of your learning to a teacher in school (photos, videos, art work, etc.) and they'll give you the CU Activity Stamp Code to enter onto CU Online and claim your credits

What skills will I be developing in this challenge?





COME AND JOIN US FOR A
FUN AND SPOOKTACULAR

OCTOBER HALF-TERM



FROM SATURDAY 21ST - SUNDAY 29TH OCTOBER

SCARY SCARECROW TRAIL
OUTDOOR CINEMA
AUTUMNAL GARDENS
FREE HALLOWEEN CRAFTS



www.novacitycentre.com



01709 801 261



ROTHERHAM

HOLIDAY *October* CLUB

23rd - 27th Oct



ONLY £12



OCTOBER HALF TERM ACTIVITY CAMPS

MONDAY 23RD OCTOBER 2023

£14 PER CHILD, PER SPORT

WORLD CUP FOOTBALL ACADEMY

**GYMNASTICS & MINI VFIT
TRAMPOLINING ACADEMY**



10am till 3pm

Registration from 9:30am

Presentation for all camps at 2:45pm



Wickersley Northfield Primary School,

Northfield Lane, Wickersley,

Rotherham S66 2HL.

ACTIVITIES ARE FOR BOTH BOYS AND GIRLS - F2 TO YEAR 6

No refunds to be given and the transfer of children places is not allowed.

Max 32 places per day per sport, first come first served to be booked on.

Presentation's for all Camps from 2:45pm (15 minutes before the end of the day).

Please note that offline payments will not be accepted.

All children must wear appropriate footwear and clothing in order to participate,

and must bring along with them their own drink and lunch for the day.

You must book online by

FRIDAY 20TH OCTOBER 2023

to secure your child's place all

payments must be made

online before participation can

take place.

Online booking only at: **WWW.LIVEANDLEARNSPORTS.CO.UK**

Live & Learn Sports Director: **Mr M Richardson** Mobile: **07834 005469**



**SCAN
ME
TO
BOOK**



ROTHERHAM HEALTHY HOLIDAYS

Rotherham Healthy Holidays is funded by the Department for Education's Holiday Activity and Food Programme. The aim of the programme is to make funded places available to eligible children from Foundation Stage 2 to Year 11.



ROTHERHAM HEALTHY HOLIDAYS

Rotherham Healthy Holidays partner with a range of organisation across the borough over the Easter, Summer, and Winter school holidays to deliver the Holiday Activity and Food Programme. Each programme will last at least 4 hours a day over 4 days at Easter and Winter and 16 days over Summer.

At each programme children will take part in enriching activities, physical activity and receive a healthy meal.

The programme offers funded places to those who are eligible and aged from Foundation Stage 2 to Year 11. Some providers also offer good valued paid places.

To find out if you are eligible, please visit: www.rotherham.gov.uk/childrens-health-wellbeing/healthy-holidays

To access your funded place, you will need a Unique Reference Number that you can receive from school or your case worker.

You can contact us on healthyholidays@rotherham.gov.uk

You can find out further information by visiting www.rotherham.gov.uk/childrens-health-wellbeing/healthy-holidays

Would like more information on how to apply for free school meals? Please visit www.rotherham.gov.uk/benefits/free-school-meals





Sport & Physical Activity

Eckington Swimming Pool & Fitness Centre
 Forever Swim by Susan
 High Hopes Riding for the Disabled
 Live and Learn Sports
 NovaCity - Parkour & Freerunning
 Places for People Leisure Centres:
 - Aston-cum-Aughton
 - Maltby
 - Rotherham (Town Centre)
 - Wath-upon-Dearne

Premier Martial Arts
 Rawmarsh Runstars
 Rotherham Acro (acrobatic gymnastics)
 Rotherham Cheerleading Academy
 Rotherham United Community Sports Trust
 Sitwell Cycling Club
 Splashed Swim School
 Yorkshire Academy of Korean Martial Arts (YAKMA)



Science, Technology, Engineering & Maths



Magna Science and Adventure



Little Laboratory

History & Heritage, Galleries & Museums

Clifton Park Museum



Boston Castle



Wentworth Woodhouse



Literacy & Languages

Grimm & co

Rotherham Libraries:

Aston, Brinsworth, Dinnington, Greasborough, Kimberworth, Kiveton Park, Maltby, Mowbray Gardens, Rawmarsh, Riverside, Swinton, Thorpe Hesley, Thurcroft, Wath, Wickersley



Mental & physical health & wellbeing

Mini First Aid (Sheffield, Rotherham, Barnsley)



Find their details here:

www.childrensuniversity.co.uk/activity-search/

*Watch this space for BRAND NEW Learning Destinations coming soon...



Dance and Theatre

Gillian Banks Theatre School 

Helen O'Grady Drama Academy (Rotherham) 

Jack's Theatre School (Catcliffe)



 Killamarsh Dreams

 Liquid Dance Academy
Building confidence, fitness & friendships

Art, Culture & Music

Rotherham Music

Maltby Miners' Welfare Training Band

Sarah Anne Bush Music



Uniformed Organisations

11th Rotherham Guides (Whiston)

12th Rotherham Scout Group (Swallownest)

35th Rotherham (St James, North Anston) Scout Group

9th Rotherham Scout Group (Rawmarsh)

Family Learning & Multi-activity

Gulliver's Valley



 Whiston Youth Club
Whiston Youth Club

 WanderList
Wanderlist

 Kidzone Youth Club
(Brinsworth)

Not on the list?

If your activity provider isn't yet on the list, then nominate them here:

<https://bit.ly/CUNominateaLearningDestination>

We'll get in touch and invite them to join us...and it's FREE!

Find their details here:

www.childrensuniversity.co.uk/activity-search/

*Watch this space for BRAND NEW Learning Destinations coming soon...



Doncaster Children's University Learning Destinations Autumn 2023

Dance, Theatre & Music

1-2-1 Music Lessons at Your Music Academy
 A Mind Apart Theatre Company (Performing Arts Classes & After School Clubs)
 Arabesque Dance School
 Adams Academy of Dramatic Arts
 All That Jazz School of Dance and Acro
 Allegro Theatre Dance Academy
 Cadenza4Kids Music Lessons & Activities
 Cast Youth Theatre
 Claire Anderson School of Theatre & Dance
 Cre8tive Dance Company
 Dance & Fitness at KT Danz Studios
 FAB School of Dance
 Guitar Lessons
 Haydans Dance Company
 Holly Anderson Speech & Drama
 Laura's Dance Academy
 Nadine Martin Academy of Irish Dancing
 Nellie Stages School of Theatre Dance
 RFS School of Dance - New Rossington
 Ridgeway School of Dance
 Stagecoach Performing Arts
 Sugar Kane's School of Dance
 Swaglets (The Point)
 Swag Choir (The Point)
 The McLeod Academy of Irish Dancing

Uniformed Organisations

9th Doncaster Scouts
 10th Barnby Dun Scout Group
 12th Kirk Sandall Brownies
 19th Doncaster (Askern) Scout Group
 22nd Doncaster Brownies

28th Doncaster Scout Group
 42nd Scawthorpe Beaver Scout Group
 42nd Scawthorpe Club Scouts Group
 42nd Scawthorpe Scouts
 55th Rainbows, Brownies & Guides
 58th Doncaster Scout Group
 61st Bentley Air Scouts Group
 62nd Beavers (Thorne)
 68th Doncaster (Hatfield) Scout Group
 71st Doncaster Scouts Group (Hunafa)
 9th Doncaster Danum (York Road) Scout Group
 Fire Cadets
 Fire Station Open Days
 Rainbows 5-7 Girl Guiding
 Sea Cadets
 Squirrel Wood
 7th Doncaster Boy's Brigade & Girls Association
 Brownies (Scawthorpe)

Sport & Physical

Active Fusion
 All Stars Cricket Barnby Dunn CC
 Bentley Colliery Cricket Club (Junior)
 Armthorpe Kingfishers Swimming Club
 Bessacarr Football Club
 Chun Ma Taekwondo Tigers
 Clancy Briggs Balance Class
 Clancy Briggs Pedal Class
 Clancy Briggs Race Class (Biking)
 Dearne Valley Life Saving Club
 Direct Martial Arts
 Doncaster Fencing Club
 Doncaster Gymnastics Academy
 Doncaster Knights Mini Juniors
 Doncaster Martial Arts Centre (DMAC)
 Eagle Hoops Basketball
 East West Martial Arts
 Elmfield Gymnastics &

Trampolining Club
 Endeavour Martial Arts
 Fir Tree Farm Equestrian Centre (Moss) - Horse Riding Lessons, Hacks, Stable Management.
 Football and Fitness Coaching (Sandall Beat Juniors)
 Football Club @ Rosedale Primary School
 Goals Football Coaching
 Green Star Canoe Club
 Harworth Colliery FC
 Horse Riding Lessons (Fir Tree Farm Equestrian Centre)
 Kixx Football
 Learn to Swim (DCLT)
 Martial Arts 4U
 Spa Askern Swimming Club
 Sport Works (Multi-Sports)
 Sprotbrough & Cusworth Crusaders
 Stefy Bull Boxing Academy
 Stefy Bull Boxing Academy (Free Junior Fitness)
 Stefy Bull Boxing Academy (Mini Hitters Non Contact Boxing)
 St Peter's Amateur Boxing Club
 Swimstars & Dolphins
 TaekwonDo (Armthorpe, Scawsby Community Centre)
 Tickhill Juniors
 Traditional Japanese Ju Jitsu
 Trundle Lane Riding School
 Ultimate Taekwondo Club
 Vulcan Show Corps/Doncaster Danum Scout Band

Family Learning & Multi-Activity

All Aboard Family Workshop (The Point)
 Big Farmers at Boston Park Farm
 Blast Off To Planet Fun (Jane Keightley Author)
 Boston Park Farm
 Board Gaming at Bake Battle & Roll
 Cookstars (AFCL)

Conisbrough Castle
 Crafts and Creations
 Doncaster Danum Gallery, Library and Museum
 Doncaster Stories Literacy Lab (Mexborough)
 Edenthorpe Community Library
 Elsham Activity Centre (Team Building & Gel Master)
 Dtmstld (First Aid for Children)
 Exhibitions at The Point
 Family Learning (AFCL)
 Hatfield St. Lawrence Church
 Journey Education Group
 Legacy Youth
 The ME Project (Artfully Adapting After COVID)
 Playtime Workshops
 Play Valley (Doncaster)
 P.O.P (Place of Potential)
 Print Imperials
 Rachael's Little Bookworms
 Reading on Your Head
 Relax Kids with Hollie
 Scotty's Heros
 Sensory Music Sundays (Cura-Care)
 The Creation Station
 Thorne Children's Church
 Tuneful Chatter (The Point)
 Treasure Kids (Life Church)
 Twisted Knot at the Hive
 Yorkshire Wildlife Park

Outdoors, Nature & Environment

Doncaster Forest School
 Forest Kind
 Friends of Sandall Beat
 Potteric Carr (Home Education)
 Potteric Carr (Home Education: Forest School)
 Reptile Rendezvous & Furry Friends (Animal Handling)
 Wildlings and Wellbeing CIC (Community Forest School)

Contact Us

Email: heather.coultard@don.ac.uk | liane.clark@don.ac.uk | rachel.tindall@don.ac.uk

Facebook: [DoncasterChildrensUniversity](https://www.facebook.com/DoncasterChildrensUniversity) **Twitter:** @DoncasterChildU

Address: Doncaster College, The Hub, Chappell Drive, Doncaster DN1 2RF

Web: www.childrensuniversity.co.uk



Doncaster College



Dance and Theatre

A Mind Apart Theatre Company
Constance Grant Dance Centre
Create Dance
Dance Unlimited
Dinky Divas Dance
Excel Dance
Funky Dance Fever
Grenoside Pantomime
Grow Theatre
Hype Dance Academy
Montgomery Theatre
Noodle Performance Arts Ltd
Razzamataz Theatre School (Sheffield)
Ruth Marsh School of Dancing
Sheffield Theatres
Spotlight School of Dance
Stagecoach Sheffield
Stepz Dance Academy

Galleries & Museums

Abbeyle Industrial Hamlet Museum
Graves Gallery
Kelham Island Industrial Museum
Millennium Gallery
National Emergency Services Museum
Weston Park Museum

Outdoors, Nature & Environment

Discover TRIBE
Foresters
Grow Theatre
Rivelin Woodland Skills
Secret Garden (Friends of Zion Graveyard)
South Yorkshire Orienteers
Springfield TARA
Storybook Forest School

Study Support & Tuition

Explore Learning - Sheffield
Kip McGrath Education Centres - Sheffield (East, Central, North, South East & South West)
KUMON - Crookes Centre
Tailored Tuition
The Learning Studio

Science, Technology, Engineering & Maths

Amazelab
ComputerXplorers
Discovery STEM Education
Imagination Gaming
Maker Futures (Uni of Sheffield)
Steamworks FabLab
Uni of Sheffield - science and engineering

History & Heritage

Abbeyle Industrial Hamlet
Arriba Learning
Japanese Play Group and Study Club
Manor Lodge Discovery Centre
Penny Rea Projects
Se habla Espanol
Sheffield Chinese School
Sheffield Young Archaeologists Club

Literacy & Languages

Arriba Learning
Japanese Play Group and Study Club
Learn Spanish with Liz
Se habla Espanol
Sheffield Chinese School
Speaque
Star Mandarin School
Sheffield Libraries - Broomhill, Burngreave, Central Children's, Chapeltown, Crystal Peaks, Darnall, Ecclesall, Ecclesfield, Firth Park, Frecheville, Gleadless, Greenhill, Highfield, Hillsborough, Jordanthorpe, Manor, Newfield, Park, Parson Cross, Southey, Stannington, Stocksbridge, Tinsley, Totley, Uppertorpe, Walkley, Woodhouse, Woodseats

Family Learning & Multi-activity

Foxhill Forum
Heeley Parish Church
Imagination Gaming
MASKK
Sheffield BID
Sheffield Family Learning
Sheffield Hallam Uni - Outreach activities
Sheffield Young Carers Project
Sparkle Sheffield
Springfield TARA
St Mary's Church - Handsworth
ZEST

Art, Culture & Music

AS Music School
Broomhill Music
Concord Allstars Junior Marching Band
Concord Youth Music (see above)
Create Sheffield (Sheffield Adventures)
Harmony Music School
Ignite Imaginations
Kids Arts Academy
OpenUp Sheffield
Peter Burt - Piano and Guitar lessons
Rivelin Co
Sheffield Music Academy
Sheffield Music Hub
Sheffield Theatres
Silverwood Music School
Yorkshire Artspace

Mental & physical health & wellbeing support

Mini First Aid (Sheffield)
Sheffield Young Carers Project
Sparkle Sheffield

See next page for...

- Sports and physical activity
- Uniformed organisations



Find their details here:
www.childrensuniversity.co.uk/activity-search/



Sport & Physical

(Hallamshire) Academy of Tennis
Active Kids at Sport Sheffield (University of Sheffield)
Active Summer Camps
Arches School Sports Partnership
Awesome Walls (Sheffield)
Castle Martial Arts
Chapelton Amateur Swimming Club
Climbing Works
Excel Martial Arts
Fulwood Sports Club (John Mullins Squash Academy)
Graves Health & Sports Centre
Greentop Circus
Grenoside Equestrian Centre
High Green Gymnastics Academy
Hillsborough Park Rangers Under 9s team
King Edwards Swimming Pool
Leisure United (formerly St George's Park) - Graves,
Thornccliffe & Westfield Centres
Little Messys Sheffield
Pilsung Taekwondo (EISS centre)
Sheffield City Trust - Concord Sports Centre, EISS,
Heeley, Hillsborough, Ice Sheffield, Ponds Forge,
Springs, & Westfield Centres

Sheffield Diving
Sheffield Gymnastics Academy
Sheffield Hatters Community Basketball Club
Sheffield Hawks Rugby Club
Sheffield Horangi Taekwondo
Sheffield Lifesaving Club
Sheffield Roller Hockey Academy
Sheffield United Community Foundation Football Camp
Sheffield United Cricket Club
Sheffield Wednesday FC Community Programme
Sheffield Wildcats Rink Hockey Club
South Yorkshire Orienteers
Thornccliffe Health & Sport Centre
Underbank Outdoor Activity Centre (AKA Peak
Adventures)
Westfield Junior Badminton Club
Woodhouse Junior Football Club
Wortley Rugby Union Club
Yong-gi Tae kwon do
ZEST

Uniformed Organisations

1st Hallam and Crosspool Rainbows
1st Beighton Brownies
2nd Beighton Rainbows
18th Sheffield Girls' Brigade
25th Sheffield (Ecclesfield) Scout Group
35th Sheffield St Oswald's Scout Group
54th Sheffield Boys' Brigade
54th Sheffield (St Luke's Rainbows, Brownies)
54th Sheffield (Lodge Moor) Guides
57th Fulwood Rainbows
74th Oak Street Scout Group
89th (Shortbrook) Brownies
142nd (Sheffield) Frecheville Brownies
142nd (Sheffield) Fulwood Scout Group
146th Sheffield Scouts
150th Wadsley Scouts
160th Sheffield Brownies
170th Sheffield Brownies
172nd (St Peter's) Greenhill Brownies
173rd (St Peter's) Sheffield Rainbows
173rd Sheffield Scout Group (Woodhouse)
186th Sheffield Scout Group
192nd Sheffield Rainbows (High Green)
192nd Sheffield Brownies (High Green)
192nd Sheffield Guides (High Green)
205th Sheffield Rainbows
205th Sheffield Brownies
205th Sheffield Guides
219th Sheffield Scouts
229th Sheffield (Greenhill) Scouts
230th Sheffield (Gleadless) Scouts
265th Sheffield Scouts
267th Sheffield (Dore) Scout Group
273rd Handsworth Beavers, Cubs & Scouts
280th Norton St James Scout Group - Beaver colony

See first page for...

- Dance & Theatre
- Galleries & Museums
- Outdoors, Nature & Environment
- Study Support
- Science, Technology, Engineering & Maths
- History & Heritage
- Literacy & Languages
- Family Learning & Multi-activity
- Art, Culture & Music
- Mental Health & Wellbeing Support



Find their details here:

www.childrensuniversity.co.uk/activity-search/

Nominate a Learning Destination!



Do you know an activity provider who'd make a GREAT Learning Destination?

Nominate them today:

<https://bit.ly/CUNominateaLearningDestination>

it's FREE for them to join!

there's loads of benefits on offer!

We'll contact them with more info, and invite them to join Rotherham Children's University. Once they're validated, you and your friends will be able to earn CU credits at their activities, if you have a CU Passport to Learning

for more info, contact h.oades@shu.ac.uk

WHY NOT PRINT THIS PAGE, CUT OUT THE SLIPS AND TAKE THEM ALONG TO ACTIVITY PROVIDERS TO INVITE THEM TO JOIN ROTHERHAM CU?



You're invited!



I am a member of Rotherham Children's University (CU) and I'd LOVE it if this club/group joined in too!

I earn CU credits for choosing to take part in high quality, learning activities in my own time. These credits lead to 30 different awards, as well as them helping to build my confidence, motivation, and self-esteem, develop skills, make new friends and have fun. Ask me to tell you about it!

It would be AMAZING if children were able to collect CU credits for taking part in activities here too, but we can't until this organisation is registered. It's FREE for you to join, and a really quick and easy process. Just add a few details on the link below and the CU Team will be in touch: www.childrensuniversity.co.uk/get-involved/learning-providers/ Once registered, you don't have loads of paperwork to fill in plus it might even bring in more members to our group. There's lots of benefits for you as well - free publicity is just one of them!

Contact Helen Oades (h.oades@shu.ac.uk or 07760 116874) for more info. I hope you'll be able to join soon so I can earn more CU awards!



You're invited!



I am a member of Rotherham Children's University (CU) and I'd LOVE it if this club/group joined in too!

I earn CU credits for choosing to take part in high quality, learning activities in my own time. These credits lead to 30 different awards, as well as them helping to build my confidence, motivation, and self-esteem, develop skills, make new friends and have fun. Ask me to tell you about it!

It would be AMAZING if children were able to collect CU credits for taking part in activities here too, but we can't until this organisation is registered. It's FREE for you to join, and a really quick and easy process. Just add a few details on the link below and the CU Team will be in touch: www.childrensuniversity.co.uk/get-involved/learning-providers/ Once registered, you don't have loads of paperwork to fill in plus it might even bring in more members to our group. There's lots of benefits for you as well - free publicity is just one of them!

Contact Helen Oades (h.oades@shu.ac.uk or 07760 116874) for more info. I hope you'll be able to join soon so I can earn more CU awards!



You're invited!



I am a member of Rotherham Children's University (CU) and I'd LOVE it if this club/group joined in too!

I earn CU credits for choosing to take part in high quality, learning activities in my own time. These credits lead to 30 different awards, as well as them helping to build my confidence, motivation, and self-esteem, develop skills, make new friends and have fun. Ask me to tell you about it!

It would be AMAZING if children were able to collect CU credits for taking part in activities here too, but we can't until this organisation is registered. It's FREE for you to join, and a really quick and easy process. Just add a few details on the link below and the CU Team will be in touch: www.childrensuniversity.co.uk/get-involved/learning-providers/ Once registered, you don't have loads of paperwork to fill in plus it might even bring in more members to our group. There's lots of benefits for you as well - free publicity is just one of them!

Contact Helen Oades (h.oades@shu.ac.uk or 07760 116874) for more info. I hope you'll be able to join soon so I can earn more CU awards!



I am a member of Rotherham Children's University (CU) and I'd LOVE it if this club/group joined in too!

I earn CU credits for choosing to take part in high quality, learning activities in my own time. These credits lead to 30 different awards, as well as them helping to build my confidence, motivation, and self-esteem, develop skills, make new friends and have fun. Ask me to tell you about it!

It would be AMAZING if children were able to collect CU credits for taking part in activities here too, but we can't until this organisation is registered. It's FREE for you to join, and a really quick and easy process. Just add a few details on the link below and the CU Team will be in touch: www.childrensuniversity.co.uk/get-involved/learning-providers/ Once registered, you don't have loads of paperwork to fill in plus it might even bring in more members to our group. There's lots of benefits for you as well - free publicity is just one of them!

Contact Helen Oades (h.oades@shu.ac.uk or 07760 116874) for more info. I hope you'll be able to join soon so I can earn more CU awards!